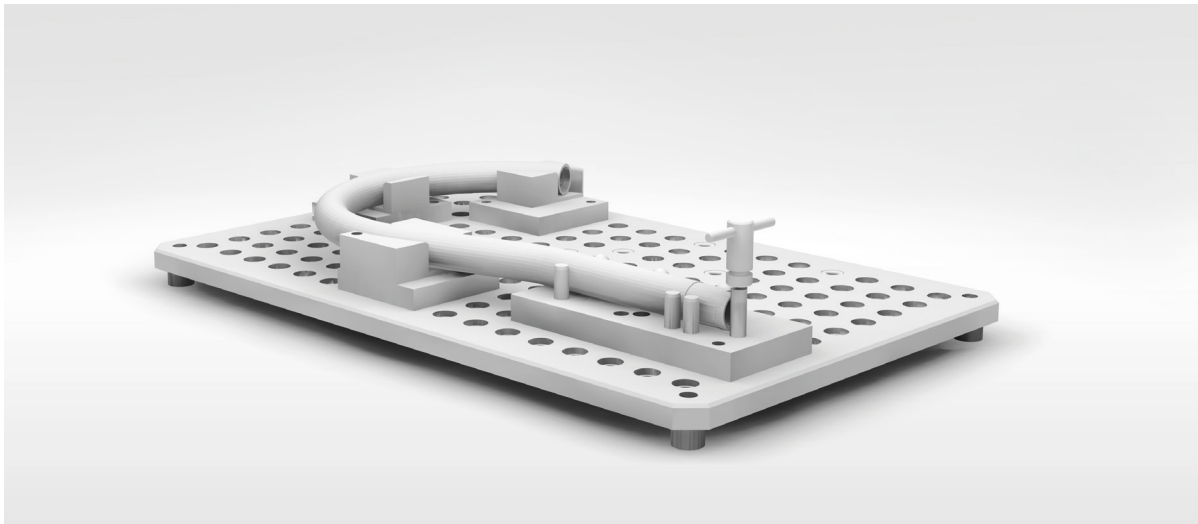


## Modular bending gauge for pipes



### Task

A modular gauge must be produced to test the bent pipes. It is then provided to the operating personnel at the unit. The partial segments of the gauge must be designed intermateably, so that different kinds of pipes can be tested. Future bending geometries must be covered by the modularity of the gauge.

### Solution

An aluminium pin board with a grid of headed drill bushes enables any desired positioning of the pipe elbow gauges. These are equipped with cylindrical pins, so they can be positioned on the grid with high repeat accuracy. The selected splitting of the headed drill bushes means that in terms of flexibility and modularity there are no limits for future products.

### Result

The bending gauge is stored with the operating personnel of the unit. When setting up the bending machine the gauge is equipped in advance with the marked pipe element segments, in order to control the first bent pipe and when necessary to adjust the bending machine. During the course of the project the gauge was implemented for static process controls.

### Asytec AG

Kreuzmatte 1b, CH-6260 Reiden  
+41 62 771 78 68  
info@asytec.ch, www.asytec.ch